



ASKING \$2,500,000



CONTACT:

MAHLON TOBIAS

mahlon@tobiascommercial.com

Direct: 909.645.2427

www.tobiascommercial.com

CalBRE License # 01398009

BRETT PACK

bpack@tobiascommercial.com

Direct 619.787.4046

CalBRE License # 01866035

± 6.35 Acres of Freeway Frontage

Nevada Road • Perris, CA • 92571



PROPERTY FEATURES:

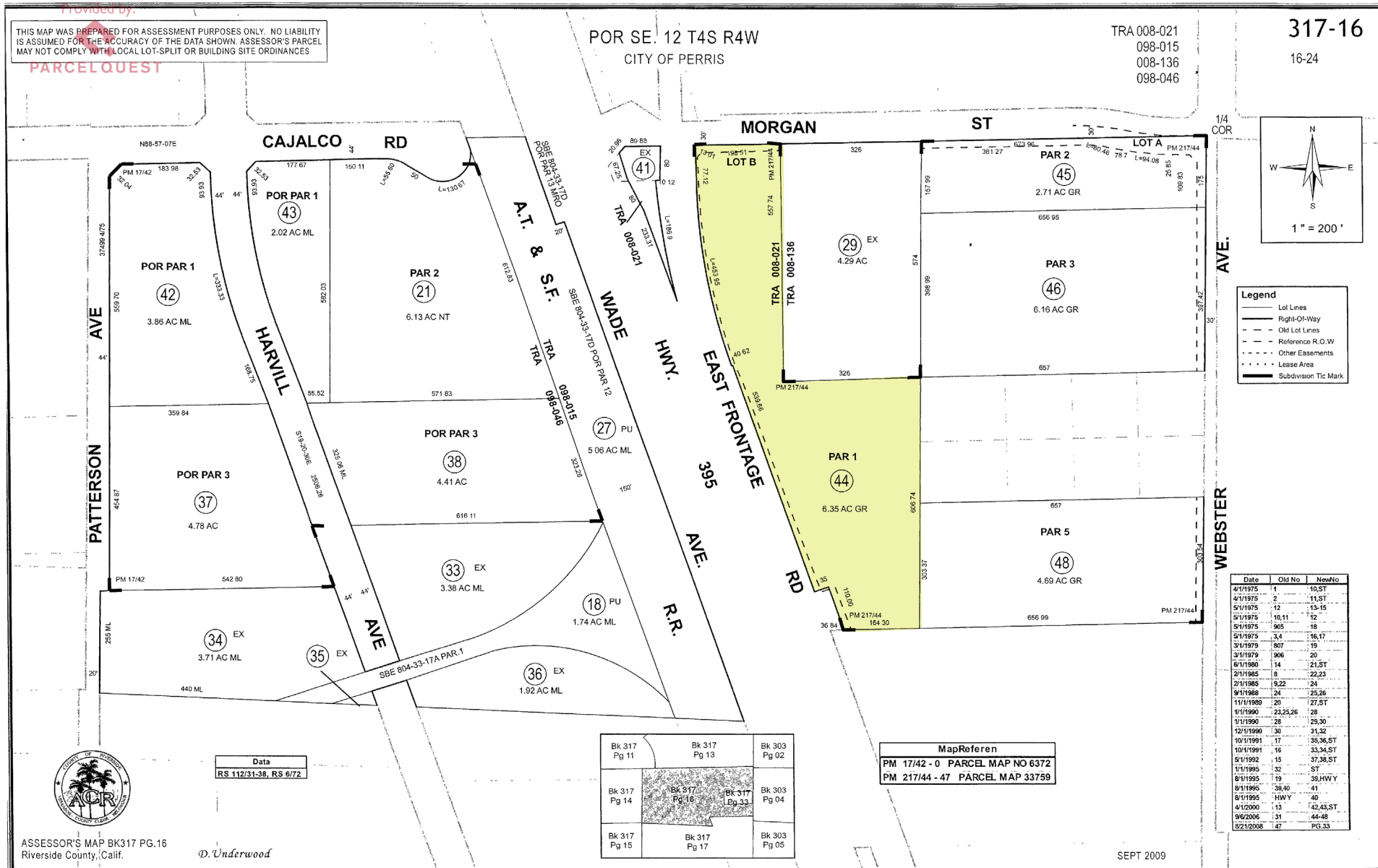
- ASKING: \$2,500,000 (+/- \$9/PSF)
- **Premium Parcel with over 1,200 Feet of Freeway Frontage just South of Ramona Expressway**
- ZONED: Business / Professional Office (BPO)
- **Excellent Access from Ramona Expressway**
- Optimal for general retail, hospital / medical care, medical offices, schools, business / professional offices, or light industrial
- All Utilities available to the property
- Curb, gutter, and street lights completed
- Adjacent to the Val Verde Unified School District, High School, and Success Academy
- APN #317-160-044



This document has been prepared for advertising and general information only. Tobias Commercial makes no guarantees, representations or warranties of any kind, expressed or implied, regarding the information including, but not limited to, warranties of content, accuracy and reliability. Any interested party should undertake their own inquiries as to the accuracy of the information. Tobias Commercial excludes unequivocally all inferred or implied terms, conditions and warranties arising out of this document and excludes all liability for loss and damages arising there from.

PARCEL MAP

Nevada Road • Perris, CA • 92571



This document has been prepared for advertising and general information only. Tobias Commercial makes no guarantees, representations or warranties of any kind, expressed or implied, regarding the information including, but not limited to, warranties of content, accuracy and reliability. Any interested party should undertake their own inquiries as to the accuracy of the information. Tobias Commercial excludes unequivocally all inferred or implied terms, conditions and warranties arising out of this document and excludes all liability for loss and damages arising there from.

AERIAL

Nevada Road • Perris, CA • 92571



CONTACT: MAHLON TOBIAS BRETT PACK
Direct 909.645.2427 Direct 619.787.4046

This document has been prepared for advertising and general information only. Tobias Commercial makes no guarantees, representations or warranties of any kind, expressed or implied, regarding the information including, but not limited to, warranties of content, accuracy and reliability. Any interested party should undertake their own inquiries as to the accuracy of the information. Tobias Commercial excludes unequivocally all inferred or implied terms, conditions and warranties arising out of this document and excludes all liability for loss and damages arising there from.